

FTE Manager

for Microsoft Dynamics™ GP 9.0 and 10.0**

Budget and Manage FTE's by Fiscal Year, Department, and Position in Microsoft Dynamics™ GP Payroll

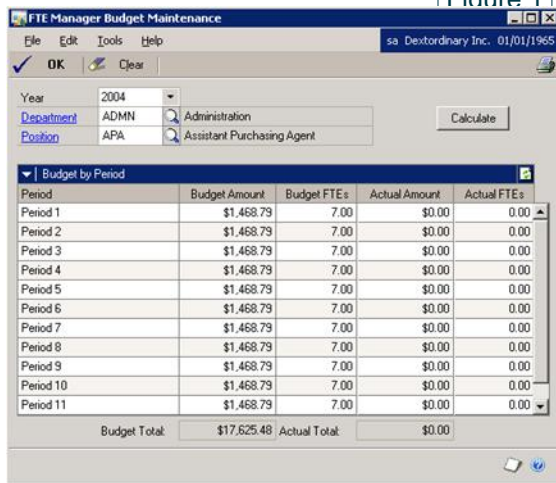
How are you managing your budget?

With **FTE Manager**, you can stay on budget by managing HR tasks in conjunction with the personnel budget.

Do you manage your budget by department?

Would it be beneficial to be able to budget FTE's and dollars by department and position for a given fiscal year and be able to break down the budget by fiscal periods to compare actual versus budgeted? (See *Figure 1*)

Figure 1

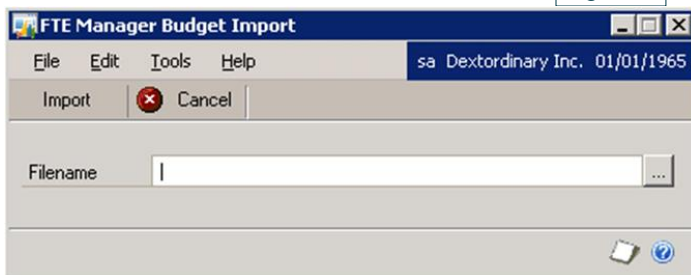


Period	Budget Amount	Budget FTEs	Actual Amount	Actual FTEs
Period 1	\$1,468.79	7.00	\$0.00	0.00
Period 2	\$1,468.79	7.00	\$0.00	0.00
Period 3	\$1,468.79	7.00	\$0.00	0.00
Period 4	\$1,468.79	7.00	\$0.00	0.00
Period 5	\$1,468.79	7.00	\$0.00	0.00
Period 6	\$1,468.79	7.00	\$0.00	0.00
Period 7	\$1,468.79	7.00	\$0.00	0.00
Period 8	\$1,468.79	7.00	\$0.00	0.00
Period 9	\$1,468.79	7.00	\$0.00	0.00
Period 10	\$1,468.79	7.00	\$0.00	0.00
Period 11	\$1,468.79	7.00	\$0.00	0.00
Budget Total	\$17,625.48	7.00	\$0.00	0.00
Actual Total			\$0.00	

Are you able to import your budget from Excel?

FTE Manager allows you to use SmartList Builder to export your data to Excel for forecasting and budgeting. You are also able to import position control budget data by fiscal year, department, position and/or period combination; thereby allowing you truly budget by FTE. (See *Figure 2*)

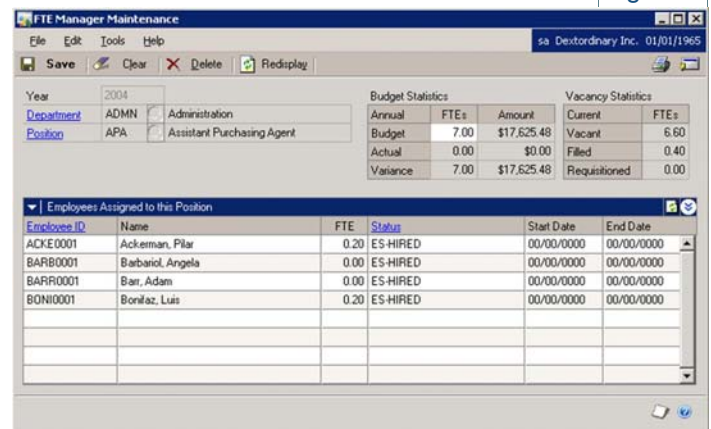
Figure 2



Do you wish it was easier to maintain budget and position data?

The Position Control maintenance window allows users to view budget and vacancy statistics, as well as employees assigned to that budget. The "Go To" button allows direct access to budgets, employee budget Information and requisitions. (See *Figure 3*)

Figure 3



Budget Statistics			Vacancy Statistics	
Annual	FTEs	Amount	Current	FTEs
Budget	7.00	\$17,625.48	Vacant	6.60
Actual	0.00	\$0.00	Filed	0.40
Variance	7.00	\$17,625.48	Requisitioned	0.00

Employee ID	Name	FTE	Status	Start Date	End Date
ACKE0001	Ackerman, Pilar	0.20	ES-HIRED	00/00/0000	00/00/0000
BARB0001	Barbasiol, Angela	0.00	ES-HIRED	00/00/0000	00/00/0000
BARR0001	Bar, Adam	0.00	ES-HIRED	00/00/0000	00/00/0000
BONI0001	Bonifaz, Luis	0.20	ES-HIRED	00/00/0000	00/00/0000

Are you able to password override in order to exceed budget?

FTE Manager alerts users and requires override passwords when certain actions might cause the budget to be exceeded. Password protection can be configured for the following: (See *Figure 4*)

- Requisitions that exceed the budget
- Hiring an employee that will exceed the budget
- Changing employee information that will exceed the budget

Figure 4

